

DATENBLATT

PCIE-1762H

HABEN SIE FRAGEN ODER WÜNSCHEN SIE EIN INDIVIDUELLES ANGEBOT?

Unser Team berät Sie gerne persönlich.

TELEFON + 49 (0) 81 41/36 97-0

TELEFAX + 49 (0) 81 41/36 97-30

E-MAIL info@plug-in.de

WWW.PLUG-IN.DE

ADRESSE

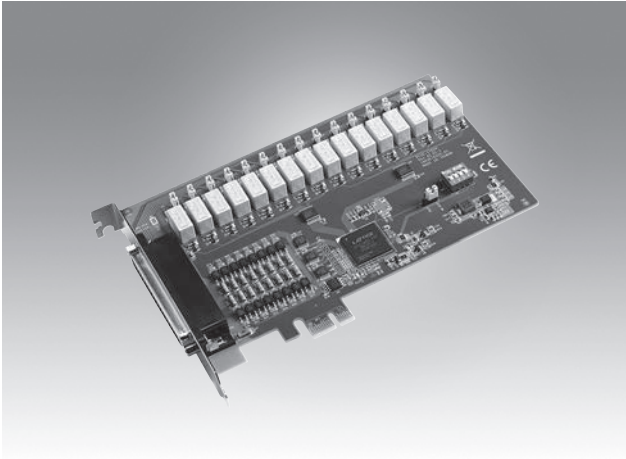
Am Sonnenlicht 5

D-82239 Alling bei München



PCIE-1762H

16-ch Relay and 16-ch Isolated Digital Input w/ digital filter & interrupt PCIe Card



Features

- 16-ch digital input and 16-ch relay
- Interrupt handling capability for all DI channels
- Selectable Digital filter time for all DI channels
- Output status readable
- LED indicator to show activated relays
- Selectable Form A or Form B

Introduction

The PCIE-1762H provides 16 opto-isolated digital inputs with isolation protection of 2,500 V_{DC} for collecting digital inputs in noisy environments, 16 relay actuators that can be used as a on/off control devices or small power switches.

All of the input signals can be used as interrupt request signals and also disable or enable the interrupt in each channel and support the edge of the input signals, at which to generate an interrupt. all of PCIE-1762H DI channel has a digital filter to prevent wrong recognition of input signals from carrying noise or a chattering.

Specifications

Isolated Digital Input

- **Channels** 16
- **Input Voltage** Logic 0: 3.0 V max.
Logic 1: 10 V min. (30V max.)
- **Interrupt Capable Ch.** 16
- **Isolation Protection** 2,500 V_{DC}
- **Opto-Isolator Response** 50 μ s
- **Input Resistance** 2.7 k Ohm 1 W
- **Digital Filter Time**

Setting Data(n)	Digital Filter Time	Setting Data (n)	Digital Filter Time	Setting Data (n)	Digital Filter Time
0 (00h)	The filter function is not used.	7 (07h)	16 μ sec	14 (0Eh)	2.048msec
1 (01h)	0.25 μ sec	8 (08h)	32 μ sec	15 (0Fh)	4.096msec
2 (02h)	0.5 μ sec	9 (09h)	64 μ sec	16 (10h)	8.192msec
3 (03h)	1 μ sec	10 (0Ah)	128 μ sec	17 (11h)	16.384msec
4 (04h)	2 μ sec	11 (0Bh)	256 μ sec	18 (12h)	32.768msec
5 (05h)	4 μ sec	12 (0Ch)	512 μ sec	19 (13h)	65.536msec
6 (06h)	8 μ sec	13 (0Dh)	1.024msec	20 (14h)	131.072msec

Relay Output

- **Channels** 16
- **Relay Type** Form A or Form B (Jumper selectable)
- **Contact Rating** 0.25 A @ 250 V_{AC}, 0.5 A @ 30 V_{DC}
- **Max. Switching Power** 62.5 VA, 15 W
- **Max. Switching Voltage** 250 V_{AC}, 220 V_{DC}
- **Operate Time** Typical: 3 ms, Max.: 5 ms
- **Release Time** Typical: 2 ms, Max.: 4 ms
- **Resistance** Contact: 50 m Ohm max.
- **Life Expectancy** 10⁶ cycles min. @ 0.5A/ 30V_{DC}

General

- **I/O Connectors** 1 x DB62 female connector
- **Dimensions (L x H)** 168 x 100 mm (6.6" x 3.9")
- **Power Consumption** Typical: 5 V @ 250 mA
Max.: 5 V @ 620 mA
- **Operating Temperature** 0 ~ 60°C (32 ~ 140°F)
- **Storage Temperature** -20 ~ 70°C (-4 ~ 158°F)
- **Storage Humidity** 5 ~ 95 % RH, non-condensing

Ordering Information

- **PCIE-1762H-AE** 16-ch Relay and 16-ch Isolated Digital Input w/ digital filter & interrupt PCIe Card

Accessories

- **PCL-10162-1E** DB62 Cable, 1 m
- **PCL-10162-3E** DB62 Cable, 3 m
- **ADAM-3962-AE** DB62 DIN-rail Wiring Board