

DATENBLATT

ECX-1400/1300-GTX1050-Serie

HABEN SIE FRAGEN ODER WÜNSCHEN SIE EIN INDIVIDUELLES ANGEBOT?

Unser Team berät Sie gerne persönlich.

TELEFON + 49 (0) 81 41/36 97-0

TELEFAX + 49 (0) 81 41/36 97-30

E-MAIL info@plug-in.de

WWW.PLUG-IN.DE

ADRESSE

Am Sonnenlicht 5

D-82239 Alling bei München

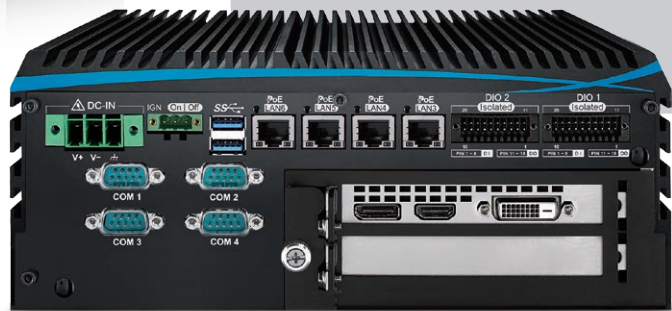


ECX-1400/1300 GTX1050

Workstation-grade Intel® Xeon®/Core™ i7/i5/i3 (Coffee Lake)
GPU Computing System with NVIDIA® GeForce® GTX 1050



- 6 Cores 8th Generation Intel® Xeon®/Core™ i7/i5/i3 (Coffee Lake-S) with workstation-grade Intel® C246 Chipset
- 2 DDR4 2666MHz Memory, up to 64GB (ECC/Non-ECC)
- NVIDIA® GeForce® GTX 10 Series graphics engine supports NVIDIA Pascal™ GPU architecture, up to 8K resolution
- Display : 1 VGA, 1 HDMI, 2 DVI & 3 DisplayPort interfaces support up to 6 independent HD displays
- Multiple external USB 3.1 Gen 2 support up to 10Gbps data transfer
- 6 Independent GigE LAN with 4 IEEE 802.3at PoE+
- 32 Isolated DIO, 6 USB 3.1, 4 COM RS-232/422/485
- Storage : 4 2.5" SSD Tray, 1 CFAST, 1 M.2, 4 SATA III
- Expansion : 1 PCI/PCIe Slot, 2 Mini PCIe/mSATA, 1 M.2
- 3 External SIM Socket for WiFi/4G/3G/LTE/GPRS/UMTS
- 12V to 36V DC Power Input with 80V Surge Protection
- Configurable Ignition Power Control



Computer Vision



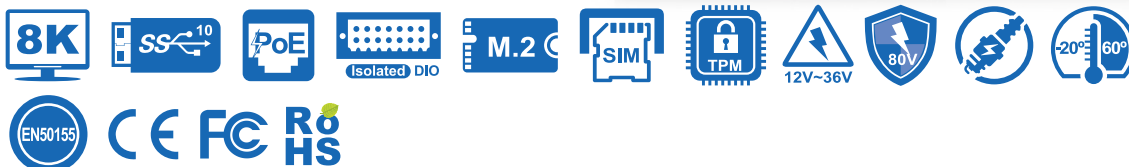
Robotic Control



Public Surveillance



Facial Recognition



Specifications

System

Processor	6 Cores Intel® Xeon®/Core™ i7/i5/i3 Processor (Coffee Lake-S)
Chipset	Intel® C246
BIOS	AMI
SIO	IT8786E
Memory	2 DDR4 2666MHz SO-DIMM, up to 64GB (ECC/Non-ECC)
OS	Windows 10, Linux

I/O Interface

Serial	4 COM RS-232/422/485 (ESD 8KV)
USB	- 6 USB 3.1 (External) - 1 USB 2.0 (Internal)
Isolated DIO	ECX-1400 Series : 32 Isolated DIO : 16 DI, 16 DO ECX-1300 Series : 16 GPIO
LED	Power, HDD, PoE, Wireless
SIM Card	3 External SIM Card Socket

Expansion

Mini PCIe	2 Full-size for PCIe/USB/External SIM Card/mSATA
PCI/PCIe	1 PCI/PCIe Slot
M.2	1 M.2 Key E Socket

Graphics

Graphics Processor	- Intel® UHD Graphics P630/630 - NVIDIA® GeForce® GTX 1050
Interface	- 1 VGA : Up to 1920 x 1200 @60Hz - 1 HDMI : Up to 4096 x 2304 @60Hz - 2 DVI : Up to 1920 x 1200 @60Hz - 1 DisplayPort : Up to 7680 x 3840 @60Hz - 2 DisplayPort : Up to 4096 x 2304 @60Hz

Storage

SATA	4 SATA III (6Gbps) support S/W RAID 0, 1, 5, 10
mSATA	2 SATA III (Mini PCIe Type, 6Gbps)
M.2	1 M.2 Key B Socket
Storage Device	- 1 Cfast Socket, Push-in/Push-out Ejector - 4 Front-access 2.5" SSD/HDD Tray

Audio

Audio Codec	Realtek ALC892, 5.1 Channel HD Audio
Audio Interface	1 Mic-in, 1 Line-out

Ethernet

LAN 1	Intel® I219LM GigE LAN supports iAMT 11.0
LAN 2	Intel® I210 GigE LAN

PoE (ECX-1400)

LAN 3 to LAN 6	GigE IEEE 802.3at (25.5W/48V) PoE+ by Intel® I210
----------------	---

Power

Power Input	12V to 36V, DC-in
Power Interface	3-pin Terminal Block : V+, V-, Frame Ground
Ignition Control	16 Mode (Internal)
Remote Switch	3-pin Terminal Block
Surge Protection	Up to 80V/1ms Transient Power

Others

TPM	Optional Infineon SLB9665 supports TPM 2.0, LPC Interface
Watchdog Timer	Reset : 1 to 255 sec./min. per step
Smart Mgmt.	Wake on LAN, PXE supported
HW Monitor	Monitoring temperature, voltages. Auto throttling control when CPU overheats.

Mechanical

Dimensions	260mm x 215mm x 104.1mm (10.24" x 8.46" x 4.10")
Weight	5.8 kg (12.79 lb)
Mounting	- Wallmount by mounting bracket - DIN Rail Mount (Optional)

Environment

Operating Temp.	35W TDP CPU : -20°C to 60°C (-4°F to 140°F) 65W TDP CPU : -20°C to 55°C (-4°F to 131°F) 80W TDP CPU : -20°C to 45°C (-4°F to 113°F)
Storage Temp.	-40°C to 85°C (-40°F to 185°F)
Humidity	5% to 95% Humidity, non-condensing
Relative Humidity	95% @ 60°C
Shock	- IEC 60068-2-27 - SSD : 50G @ wallmount, Half-sine, 11ms
Vibration	- IEC 60068-2-64 - SSD : 5Grms, 5Hz to 500Hz, 3 Axis
EMC	CE, FCC, EN50155, EN50121-3-2

* The rights of all brand names, product names and trademarks belong to their respective owners.
Copyright © 2018 Vecow Co., Ltd. All rights reserved.

Order Information

Model Name	NVIDIA® GeForce®	GigE LAN	PoE+	SSD Tray	PCIe x4	PCI	COM	USB 3.1	SIM	Isolated DIO	GPIO
ECX-1410-GTX1050T					1	-				32	-
ECX-1401-GTX1050T	GTX 1050 Ti	6	4		-	1					
ECX-1410-GTX1050					1	-				32	-
ECX-1401-GTX1050	GTX 1050	6	4		-	1	4	6	3		
ECX-1310-GTX1050T					1	-					16
ECX-1301-GTX1050T	GTX 1050 Ti	2	-		-	1					
ECX-1310-GTX1050					1	-					16
ECX-1301-GTX1050	GTX 1050	2	-		-	1					

CPU List

Series	CPU	Cache (MB)	Turbo Freq. (GHz)	TDP (W)	ECC Memory
Intel® Xeon®	E-2176G	12	4.6	80	Yes
	E-2124G	8	4.5	71	
Intel® Core™	i7-8700	12	4.6	65	NA
	i7-8700T	12	4.0	35	
	i5-8500	9	4.1	65	NA
	i5-8500T	9	3.5	35	
	i3-8100	6	3.6	65	
	i3-8100T	6	3.1	35	Yes

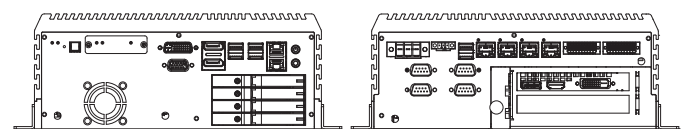
Accessories

DDR4 32G	Certified DDR4 32GB 2666 MHz RAM
DDR4 16G	Certified DDR4 16GB 2666/2400/2133 MHz RAM
DDR4 8G	Certified DDR4 8GB 2666/2400/2133 MHz RAM
DDR4 4G	Certified DDR4 4GB 2666/2400/2133 MHz RAM
PWA-160WB-WT	160W, 24V, 85V AC to 264V AC Power Adaptor with 3-pin Terminal Block (7.62mm pitch), Wide Temperature -30°C to +70°C
PWA-280WB-WT	280W, 24V, 85V AC to 264V AC Power Adaptor with 3-pin Terminal Block (7.62mm pitch), Wide Temperature -30°C to +70°C
PWS-360W	360W, 24V, 90V AC to 264V AC Power Supply
PWS-480W-WT	480W, 24V, 90V AC to 305V AC Power Supply, Wide-Temp, IP65
VESA Mount	VESA Mounting Kit
DIN-RAIL Kit	DIN Rail and VESA Mounting Kit
TMK2-20P-100	Terminal Block 20-pin to Terminal Block 20-pin Cable, 100cm
TMK2-20P-500	Terminal Block 20-pin to Terminal Block 20-pin Cable, 500cm
TMB-TMBK-20P	Terminal Board with One 20-pin Terminal Block Connector and DIN-Rail Mounting
4G Module	Mini PCIe 4G/GPS Module with Antenna
WiFi & Bluetooth	WiFi & Bluetooth Module with Antenna

Dimensions & Drawing

Unit : mm (inch)

ECX-1400 GTX1050



ECX-1300 GTX1050

