

CONPROSYS Series  
24VDC AC-DC Power Supply Unit  
CPS-PWD-30AW24-01



\* Specifications, color and design of the products are subject to change without notice.

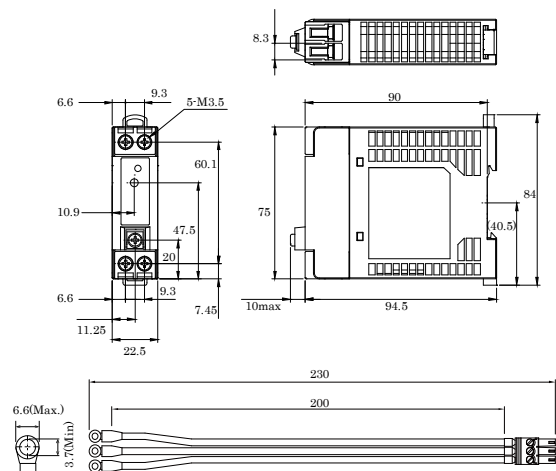
This product is an optional Power supply unit for the CPS-MCS341 series in the CONPROSYS series.

## Specification

Requirement	Description
Power supply space	
Rated input voltage	100 to 240VAC, 50 to 60Hz
Permissible input voltage *	85 to 264VAC, 50 to 60Hz
Input current	0.55A typ (100VAC), 0.35A typ (230VAC)
Rated output voltage	24VDC
Rated output current	1.3A (Max)
Isolation	Input-Output 3000VAC 1minute 50M $\Omega$ (500VDC) (At room temperature)
	Input-PE 2000VAC 1minute 50M $\Omega$ (500VDC) (At room temperature)
	Output-PE 500VAC 1minute 50M $\Omega$ (500VDC) (At room temperature)
Environmental specs	
Temperature *	Operating : -20 to +70°C non operating : -30 to +85°C
Humidity	Operating : 20 to 90%RH (No condensation) Non operating : 20 to 90%RH (No condensation)
Floating dust particles	Not to be excessive
Corrosive gases	None
Vibration resistance	10 to 55Hz / 2.0G
Construction	
Length of DC cable (mm)	200 (not include connector)
External dimensions (mm)	22.5(W)x75(D)x90(H) (not include projection)
Weight	Main body : 165g Max.
Longevity	7years (temperature 50 $\square$ C Input 100VAC, Output 0.9A)
Standard	FCC Class B, UL/c-UL, TUV CE Marking (EMC Directive Class B, LVD, RoHS Directive)

\* The derating is required.

## Physical Dimensions



## Packing List

Power Supply ...1  
Product guide ... 1  
Serial Number Label ...1  
DC Cable ...1  
Warranty Certificate ...1

\* This product requires an AC cable. We also have recommended AC cable ready to be purchased.  
For more details, please refer to the Contec website. <http://www.contec.co.jp>

## List of Optional

### AC power cable

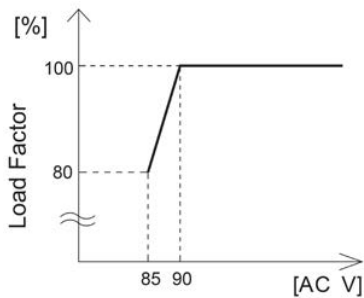
IPC-ACCODE3 : AC cable with 3-round-end terminal  
(Length : 2 meters, Rating : 7A 125V)

\* Visit the Contec website regarding information on the optional products

## External Dimensions

### Derating by input voltage

Figure below shows derating curve by input voltage.



### Input voltage derating curve

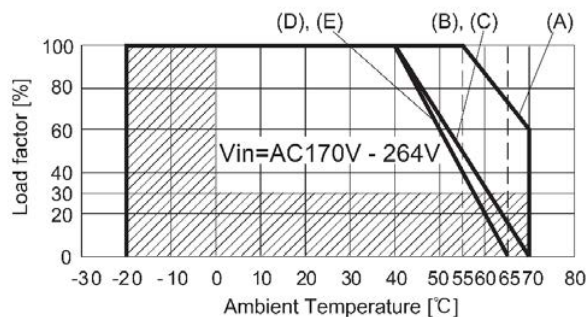
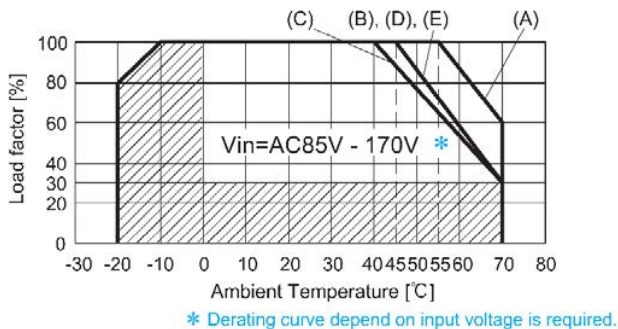
Derating by operating ambient temperature.

The operative ambient temperature as different by input voltage.

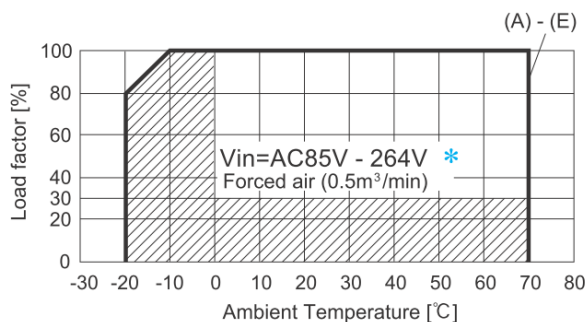
Derating curve is shown below.

In the hatched area, the specification of Ripple, Ripple Noise is different from other area.

Derating Curve (Convection)



Derating curve depend on ambient temperature



Derating curve depend on ambient temperature