

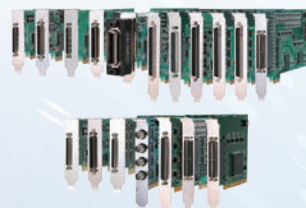
DAQ / Wireless LAN Products

Measurement and Control

Extensive product offering to meet advanced control and communication requirements.

PCI Express / PCI Cards

- From low price type to high function type available. More than 400 kinds of comprehensive lineups that can correspond to various equipment I/O. Windows and Linux API driver software includes convenient utility and sample programs. *Some products do not support Linux.
- Using our dedicated driver software, many products can also be used with the electronic measurement and analysis software MATLAB or LabVIEW. *Check our website for details.



HAT-Size Card for Raspberry Pi®

- Stacked connection up to 8 boards available
- Enables to utilize valuable development assets with multi-platform support



USB Modules

Adds functionality to PC through USB interface



- Compatible with USB1.1 and USB2.0
- Wide variety of function modules available
- Windows and Linux driver libraries

Wireless I/O Modules

- Possible to input voltage signals or input and output digital signals from about 1km aparted terminals wirelessly.
- Highly reliable mesh communication
- Windows driver library, API-PAC (W32) is available for free.
- Modules for US, EU, and China are ready



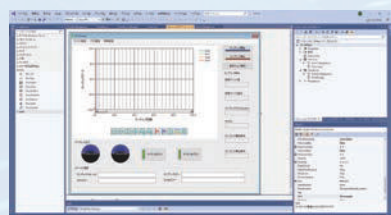
Bus Expansion Units



- Ideal for systems that need more PCI Express / PCI cards than the computer expansion bus slots.
- To solve the expansion slot / power capacity shortage problems.

Application Development and Support Tools

Low-code development of measurement systems DAQfast for Visual Studio

[Free download](#)


Quick app development with three easy steps

- STEP 1 Select components
- STEP 2 Associate components in the property settings panel (no code)
- STEP 3 Compile & execute

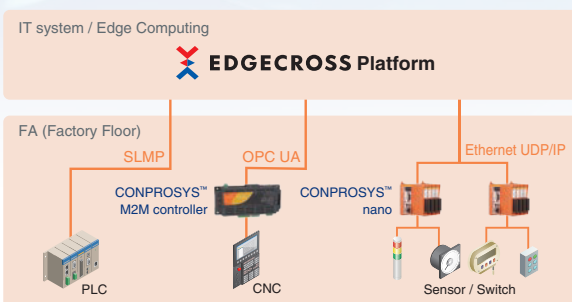
- Sophisticated components for inspection measurement and data recording apps.
- Native support for IDE Visual Studio, the standard Windows app development environment.

LabVIEW Data Acquisition Library DAQfast for LabVIEW

[Free download](#)


- Polymorphic VI adopted.
- User friendly design

Leveraging DAQ boards on Edgecross platform DAQfast for Edgecross



Data collection and read/write functions are available for devices with analog I/O, digital I/O, counter input, and Modbus slave function.

Pattern generator / Logic analyzer C-LogicDesigner

[Free download](#)

- Logic pattern creation functions (such as copy, paste, swap, and automatic generation) based on an intuitive and easy-to-understand GUI
- High-speed logic analyzer functions with sampling at up to 50MHz and pulse generator functions



Network

Wireless LAN Access Point / Stations / Converter

Access Point



FXA3000

- This product can be switched between access point (master station), station (slave station), and repeater operation modes.
- Supports an AC adapter (sold separately), DC power supplies from 5 to 30 VDC, and power supplied from the LAN connector.

Embedded Wireless LAN Board



FXE3000

- The proprietary encryption technology "WSL" available with WPA2/WPA and WEP
- Supports a various power supply
- Supports IEEE802.11n/a (W52/W53/W56)/b/g standards

Access Point for China



FXS3001-CN

- Wireless LAN converter which has been certified by the Radio Law of China.
- Compliant with 4 standards of IEEE802.11n / a (W52 / W58) / b / g

Media Converter LAN ↔ RS-232C



RP-COM(FIT)H

- Media converter which converts serial communication (RS-232C) to Ethernet communication.
- Up to 7 channels available for RS-232C (with 3 units of COM-2(FIT)GY).

Industrial Ethernet Switches

1000BASE-T 8-port PoE
~power supply function installed~



SH-9008AT-POE

- Wide range DC power input (12 to 57VDC)
- Supports -35 to 70°C / -31 to 158°F ambient temperature
- IEEE802.3af / IEEE802.3at compliant
- Built-in redundant power supply and power supply abnormality detection switching circuit

1000BASE-T 8-port
~automatic power adjustment function~



SH-9008H-FIT

- Supports 0 to 50°C / 32 to 122°F ambient temperature
- Reduces power consumption by up to 80% with automatic power adjustment function

100BASE-TX 8-port



SH-8008F

- Wide range DC power input (8 to 35VDC)
- Supports -20 to 60°C / -4 to 140°F ambient temperature
- Redundant power supply, built-in power reverse wiring circuit

100BASE-TX 5-port



CPS-HBL-8005F

- Wide range DC power input (8 to 35VDC)
- Supports -20 to 60°C / -4 to 140°F ambient temperature

CONTEC CO., LTD.