

# UTC-542

## 42.5" Ubiquitous Touch Computer UTC-542D with Intel® Celeron® J1900 UTC-542G with Intel® Pentium® N4200



DeviceOn/iService

### Features

- Low Power, High Performance and fanless system design
- Built-in Intel® Celeron® J1900 (UTC-542D Default)
- Built-in Intel® Pentium® N4200 (UTC-542G Default)
- 42.5" monitor with 16:9 widescreen display
- IP65-rated front panel for water and dust resistance
- Supports both landscape and portrait screen orientations
- Dual hot-swappable HDD/SSD slots with RAID 0/1 support
- Optional mirror coating to support smart mirror applications
- Support DeviceOn/iService software for remote device management
- i7 sku is available for F platform only



### Introduction

UTC-542 features an extra slim border all-in-one computing system equipped with wide format, touch based and mirror coating LCD panel. It is easy to integrate key peripherals for diversified self-service and interactive signage deploy in different application areas. The systems deliver updated information with well-designed interactive interfaces, fully ensure relevant content and targeted promotions are delivered. UTC series touch panel computers are the best investments to enhance user satisfaction, further brand equity, and maximize business profits. Moreover, Advantech DeviceOn/iService Software is a next-generation unified device management unified device management solution based on the WISE-DeviceOn platform. With support for batch operations and multi-device control, DeviceOn/iService enables easy device configuration and deployment for convenient remote device management.

### Specifications

Model	UTC-542D	UTC-542G
Processor System	CPU	Intel® Celeron® J1900 ( Default)
	Base Frequency	2 GHz (Quad-Core)
	Cache	2 MB
	Memory	1 x 204 pin SO-DIMM DDR3L 1333 MHz up to 8 GB
	HDD/SSD	1 x 204 pin SO-DIMM DDR3L 1867 MHz up to 8GB
	Network (LAN)	Dual hot-swappable HDD/SSD slots with RAID 0,1 support
		2 x Gigabit Ethernet ports
	I/O Ports	2 x RS-232 COM (RS-422/485)* 4 x USB 2.0 / 1 x USB 3.0 2 x Gigabit Ethernet (RJ-45) 1 x VGA 1 x HDMI
	Stereo Speaker	2 x RS-232 COM (RS-422/485)* 3 x USB 2.0 / 2 x USB 3.0 2 x Gigabit Ethernet (RJ-45) 1 x VGA 1 x HDMI
	Bus expansion	10 W x 2
OS Support	Win 10 IoT Enterprise Linux Ubuntu 16.04 Android 4.4.2	Full-size MiniPCIe/mSATA
	Win 10 IoT Enterprise Android 10 Linux Ubuntu 20.04	Full-size MiniPCIe / M.2
Environmental Specifications	Operating Temperature	990.6 x 578.8 x 60.2mm (Mirror Glass) 1016.9 x 605.2 x 60.5mm (Pcap / Mirror Pcap*)
	Relative Humidity	24.6 kg
	Vibration	0 ~ 40° C (32 ~ 104° F)
	Shock	10 ~ 95% @ 40° C non-condensing
	EMC/Safety	0.5G
	Front Panel Protection	5 G peak acceleration (11 msec. duration)
Power	Input Rating	CE (No RED certification), FCC, UL, CB, CCC, BSMI
	Power Consumption	IP65/ NEMA4 Compliant
	Input Rating	100-240V <sub>AC</sub> ~ 50/60Hz 3.7A
	Power Consumption	Max 100W

\* Mirror PCap by project request.

\*\* Only UTC-542D and UTC-542G models support Android OS.

## Specifications (Cont.)

LCD Display	Size/Type	42.5" TFT LCD with LED backlight
	Max.Resolution	1920 x 1080
	Max Color	16.7M
	Pixel Pitch (mm)	0.49 (H) x 0.49 (W)
	Brightness (cd/m <sup>2</sup> )	450 nits
	View Angle	Horizontal: ±89° or 178° total / Vertical: ±89° or 178° total
Touch Screen Option (PE/GE)	Type	Projected Capacitive Touch Panel / Mirror Glass Panel (No touch function) / Mirror Projected Capacitive Touch Panel*
	Light Transmission	>90% (Pure Glass); >25% (Mirror Coating)
	Controller	USB Interface
DeviceOn/iService Remote Device Management	Operating System	Windows 10
	Common Controls (Reboot, Shutdown)	✓
	Remote desktop	✓ (VNC)
	Audio Controls	✓*
	Connection Status	✓
	Hardware Status	✓*
	Hard Disk Status	✓*
	Batch Operation Support	✓
	OTA Storage Management	FTP
	OTA Software Updates	✓
	Software Watchlist	✓
	Software Start/Stop	✓*

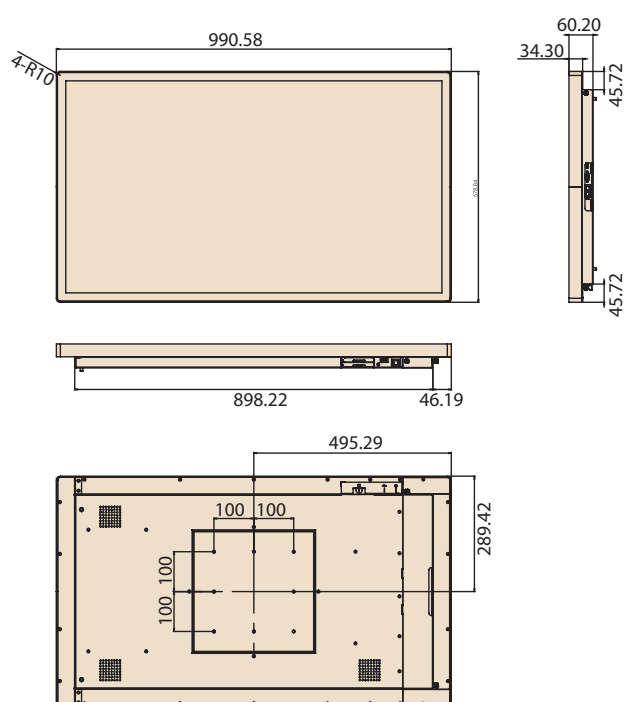
\*Dependant on device model

Note: DeviceOn/iService software must be downloaded from the Advantech website at <https://www.advantech.com/search/?q=DeviceOn%2FiService&st=support&ssl=Utility>

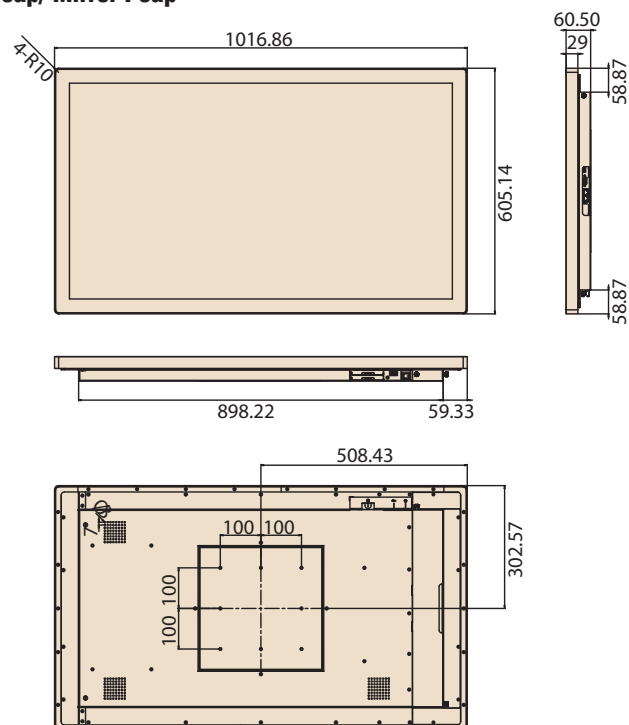
## Dimensions

Unit: mm

### Mirror



### Pcap/ Mirror Pcap



## Ordering Information

Part No.	Description
UTC-542DP-ATB0E	42.5", PCT.T/S with Intel Celeron J1900, 4GB RAM
UTC-542GP-ATB0E	42.5", PCT.T/S with Intel Pentium N4200, 4GB RAM
UTC-542GM-ATB0E	42.5", Mirror Glass with Intel Pentium N4200, 4GB RAM
1702002605	Power Cord 2P FRANCE 10A/16A 220V 1.83M 90D
1702002600	Power Cord 3P UL/CSA(USA) 125V 10A 1.83M 180D
1700000596	Power Cord (China) CCC, 10A 250V, 3P 1830mm
1700018704	Power Cord UK BSI 2P 10A 250V 180cm 18AWG

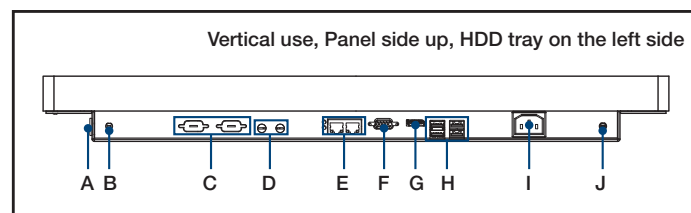
## Installation Accessory

Part No.	Description
ARES-12290-L202000	allMount, 10x10/20x10/20x20 cm, max 60kg

## UTC-542 WiFi Ordering Information

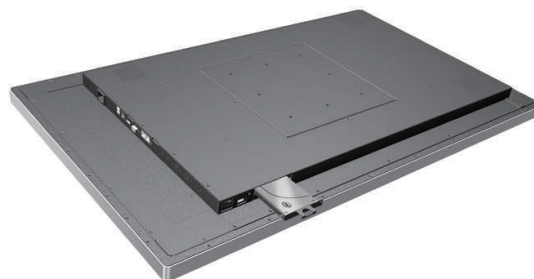
Part No.	Description
UTC-WIFI-A4E	WIFI KIT for UTC-542G (EWM-W163, M.2, 2T2R, BT4.1, Antenna)

## Fully- Integrated I/O



- A. Power Switch
- B. Antenna Port
- C. COM x 2
- D. Mic-in/ Line-out
- E. LAN x 2
- F. VGA
- G. HDMI
- H. USB 3.0 x 1, USB 2.0 x 3 (Baytrail)  
USB 3.0 x 2, USB 2.0 x 2 (Skylake)
- I. AC Power
- J. Antenna Port

## Easy Swappable HDD/SDD Slot



# DeviceOn/iService

## Unified Remote Device Management Software



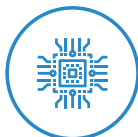
### Features

- Supports Advantech devices equipped with Windows, Android, and Linux OS
- Flexible device, location, user, and permissions management
- Enables remote monitoring and control of hardware, software, and peripherals
- Supports over-the-air (OTA) firmware and software updates
- Ensures quick, easy, and secure device onboarding
- RESTful APIs for third-party system integration

### Introduction

Advantech's DeviceOn/iService is a next-generation unified device management solution based on the WISE-DeviceOn platform. Designed to enable centralized monitoring and remote management, DeviceOn/iService supports Advantech devices equipped with Windows, Linux, or Android operating systems. The software also supports the management of applications and integrated peripherals, such as a barcode scanner, card reader, camera, and printer. Users can remotely access and control connected devices, take screenshots, rollout OTA upgrades, and use remote desktop capabilities for troubleshooting from any location at any time. Moreover, DeviceOn/iService supports batch operations to facilitate the management of multiple devices simultaneously for easy and convenient device configuration and deployment.

### Total Management



#### Devices & Hardware

- Windows, Linux, Android
- Hardware, storage, battery



#### Software & Peripherals

- Software monitoring & access
- Screens, USB devices, printers



#### Open for Expansion

- Peripheral integration
- Open APIs for integration

### Remote Access



#### Real-Time Monitoring

- Connection/hardware status
- Software/peripheral status
- Failure notifications



#### Remote Controls

- Power controls
- Audio, backlight controls
- Software controls



#### Troubleshooting

- Screenshots
- Remote desktop support

### Operational Efficiency



#### OTA updates

- System/software updates
- File repository management
- App store



#### Batch Controls

- 1-to-many batch reboot, etc.
- Time-saving tasks



#### Setup Booster

- Software/peripheral watchlist
- Roles, rule templates

Note: Some functions may vary according to the product

### System Architecture

