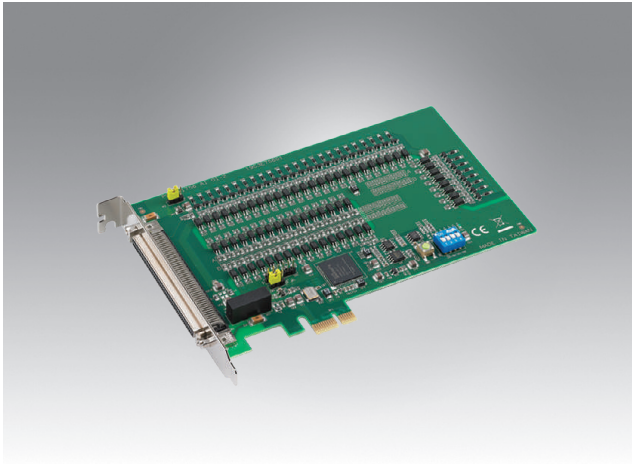


# PCIE-1756 PCIE-1756H

## 64-Ch Isolated Digital I/O PCIe Card 64-Ch Isolated Digital I/O PCIe Card with Digital Filter and Interrupt Function



### Features

- 32-ch isolated digital input
- 32-ch isolated digital output with wide output range (5 ~ 40 V<sub>DC</sub>)
- Interrupt handling capability
- Software-selectable digital filter time for all DI channels (PCIE-1756H only)
- Output status read back
- Retains the output settings and values after system hot reset

### Introduction

PCIE-1756 and PCIE-1756H are isolated DI/O cards that offer 64 isolated digital input/output channels with up to 2,500 V<sub>DC</sub> isolation protection. Featuring a wide input (10 ~ 30 V<sub>DC</sub>) / output (5 ~ 40 V<sub>DC</sub>) range and high sink current (500mA max./channel), PCIE-1756 and PCIE-1756H are ideal for use in industrial automation control systems. For PCIE-1756, all signals can be used as interrupt request signals and to disable/enable the interrupt function for every channel, as well as to support the input signal edge, which generates interrupts. All PCIE-1756H digital input channels have a digital filter to prevent inaccurate recognition of input signals that contain noise or chattering.

### Specifications

#### Isolated Digital Input

- **Channels** 32
- **Input Voltage** Logic 0: 3 V max.  
Logic 1: 10 V min. (30 V<sub>DC</sub> max.)
- **Input Current** 10 V<sub>DC</sub> @ 2.97 mA  
20 V<sub>DC</sub> @ 6.35 mA  
30 V<sub>DC</sub> @ 9.73 mA
- **Interruptible Channels** PCIE-1756: 2 (ID10, ID16)  
PCIE-1756H: 32
- **Isolation Protection** 2,500 V<sub>DC</sub>
- **Overvoltage Protection** 70 V<sub>DC</sub>
- **ESD Protection** 2,000 V<sub>DC</sub>
- **Opto-Isolator Response** 50 µs
- **Digital Filter Time (PCIE-1756H only)**

Setting Data (n)	Digital Filter Time	Setting Data (n)	Digital Filter Time	Setting Data (n)	Digital Filter Time
				14 (0Eh)	2.048msec
				15 (0Fh)	4.096msec
		9 (09h)	64µsec	16 (10h)	8.192msec
		10 (0Ah)	128µsec	17 (11h)	16.384msec
		11 (0Bh)	256µsec	18 (12h)	32.768msec
		12 (0Ch)	512µsec	19 (13h)	65.536msec
		13 (0Dh)	1.024msec	20 (14h)	131.072msec

#### Isolated Digital Output

- **Channels** 32
- **Output Type** Sink (NPN)
- **Isolation Protection** 2,500 V<sub>DC</sub>
- **Output Voltage** 5 ~ 40 V<sub>DC</sub>
- **Sink Current** 500 mA max./channel
- **Opto-isolator Response** 50 µs

#### General

- **Bus Type** PCI Express V1.0
- **I/O Connectors** 1 x 100-pin SCSI, female
- **Dimensions (L x H)** 168 x 100 mm (6.6" x 3.9")
- **Power Consumption** Typical: 3.3 V @ 385 mA  
Max.: 3.3 V @ 430 mA; 12V @ 55 mA
- **Operating Temperature** 0 ~ 60 °C (32 ~ 140 °F)
- **Storage Temperature** -20 ~ 70 °C (-4 ~ 158 °F)
- **Storage Humidity** 5 ~ 95% RH, non-condensing

### Ordering Information

- **PCIE-1756-BE** 64-ch isolated digital I/O PCIe card
- **PCIE-1756H-BE** 64-ch isolated digital I/O PCIe card with digital filter and interrupt function

#### Accessories

- **PCL-10250-1E** 100-pin SCSI to 2 x 50-pin SCSI cable, 1 m
- **PCL-10250-2E** 100-pin SCSI to 2 x 50-pin SCSI cable, 2 m
- **ADAM-3951-BE** 50-pin DIN rail wiring board w/ LED indicators
- **PCL-10250R-1E** SCSI100 Pin Type to SCSI 50 Pin Ribbon, 1m
- **PCL-10250R-2E** SCSI100 Pin Type to SCSI 50 Pin Ribbon, 2m
- **ADAM-3951R-AE** Screw-Terminal Board w/ Ribbon connector