

# ES-446 PoE ETHERNET TO SERIAL DEVICE SERVER

## Ethernet 1 Port RS232 Power Over Ethernet PoE

### CONNECT, CONFIGURE, CONTROL YOUR SERIAL DEVICES



#### Features

- 1 Port RS-232 with Power over Ethernet IEEE802.3af
- Ethernet to Serial Device Server
- Data rate from 110 to 1,000,000 baud
- User friendly interface, simple to use, powerful in operation
- Serial Port Tunnelling allows serial cable replacement over any distance, no software required
- Optional DIN rail mounting kit and stand alone power supply



#### Description

Ethernet to Serial device server with Power over Ethernet providing access to one RS232 serial port. Data transfer rates up to 1,000,000 baud, coupled with 1Mbit/s line drivers deliver uncompromising performance. Power over Ethernet PoE uses IEEE 802.3af standard, compatible with any PoE switch. Our ES range provides simple instant networked serial ports. A web interface allows secure configuration and control of the serial ports over a local network or the internet using any browser. For Windows our in-house designed 32 bit and 64 bit driver gives you local COM ports, retaining existing software applications and allowing you to connect across your network to remote devices just as if they were attached locally. Serial Port Tunnelling individually configurable allows serial cable replacement over any distance, no software required. You can access the device via TCP/IP sockets from any networked device like an Android tablet, PC or phone. On Windows OS TCP/IP sockets are handled by the Winsock API, this will differ on other OSs.

Extend your reach! Remote serial devices with local control. With Brainboxes industry renowned Lifetime Warranty and Lifetime Support!

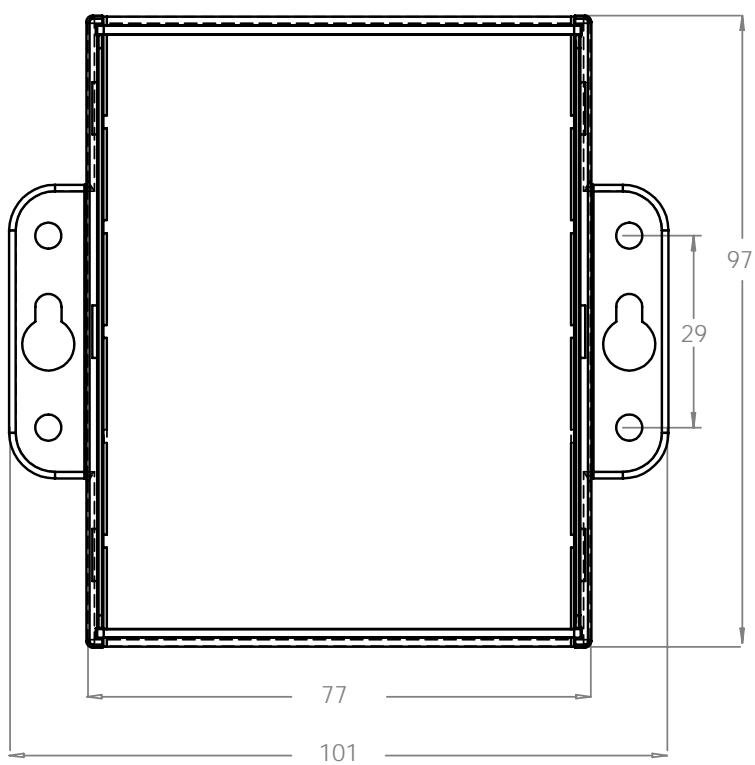
#### Example Application



## Connect, Configure, Control

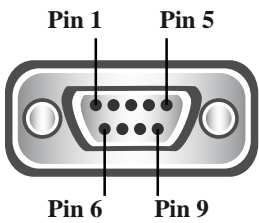
# ES-446 Ethernet 1 Port RS232 Power Over Ethernet PoE

## Box Information



Pin 1	DCD
Pin 2	RXD
Pin 3	TXD
Pin 4	DTR
Pin 5	GND
Pin 6	DSR
Pin 7	RTS
Pin 8	CTS
Pin 9	RI

RS232 Pinout (9 Pin Male)



## LED Information

Status LED	Green	Device Ready
	Flashing Yellow	Changing Settings
	Flashing between Red & Green	Querying IP
	Flashing Green/Red	User performing Hard Reset
	Flashing between Green & Red/Yellow	IP address diagnostic
	Flashing between Green & Yellow	Initialization diagnostic
Serial Port LEDs	Green light on	Port Open
	Flashing Green	Data RX / TX
Network LED	Green light on	Link Established
	Flashing Green	Data RX / TX

## Port

Ports	1 port RS232
Connector	DB9 Connector - 9 Pin Male
Power Input	Power Over Ethernet OR 5 - 30V DC input, reverse polarity protected
Power Consumption	1.5 Watts Typical

# ES-446 Ethernet 1 Port RS232 Power Over Ethernet PoE

## Port Settings - RS232

<b>Baud Rate</b>	From 110 - 1,000,000 1 MegaBaud
<b>Data Bits</b>	5,6,7 or 8
<b>Parity</b>	Odd, Even, None, Mark or Space
<b>Stop Bits</b>	1 or 2
<b>Flow Control</b>	RTS/CTS, DSR/DTR, XON/XOFF
<b>Tx/Rx Modes</b>	Point to Point

## Port Settings - Ethernet

<b>Data Rate</b>	10/100 Mega bits/second
<b>Cabling</b>	Normal / Crossover auto-sensing (Auto-MDIX)
<b>Power over Ethernet</b>	Power Over Ethernet OR 5 - 30V DC input, reverse polarity protected IEEE 802.3af

## Environmental

<b>Operating Temperature</b>	0 °C to +60 °C / 32 °F to +140 °F
<b>Ambient Relative Humidity</b>	5 to 95% (non-condensing)
<b>Housing</b>	IP-30 rated case

## Software

<b>Network Protocols</b>	ICMP, IP, TCP, UDP, DHCP, BOOTP, Telnet, HTTP, RFC2217
<b>Data Transfer Protocol</b>	TCP
<b>Configuration Options</b>	Windows Utility, Web Interface
<b>OS Compatibility</b>	Communicate with Device over TCP from any OS / Microsoft Windows 8 32 bit 64 bit Editions / Windows Server 2012 / Microsoft Windows 7 32 bit 64 bit Editions / Windows Server 2008 32 bit 64 bit Editions / Windows Vista 32 bit 64 bit Editions / Fully RFC2217 compliant / Interface for other OS's & Linux

## Approvals

<b>Industry Approvals</b>	AEO C-TPAT Microsoft Certified Gold Partner WEEE RoHS EMC: CE TAA
<b>Microsoft Approvals</b>	Microsoft Certified Gold Partner
<b>Microsoft Signed Drivers</b>	Windows 8 32 bit 64 bit Editions Windows 7 32 bit 64 bit Editions



GB AEOF 00031/11



## Packing Information

<b>Packaging</b>	Quick Start Guide, Installation CD including manual, Microsoft signed drivers & utilities
<b>Device</b>	Ethernet 1 Port RS232 Power Over Ethernet PoE
<b>Accessory Items</b>	Available from Brainboxes : Optional Global Power Supply - PW-800, DIN-Rail Mounting Kit - MK-048
<b>Packaged Weight</b>	0.234 kg, 8.25 ounces
<b>Packaged Dims</b>	160x135x45 mm, 6.3x5.3x1.8 inches
<b>UPC number</b>	837324003710

# ES-446 Ethernet 1 Port RS232 Power Over Ethernet PoE

## Product Support

### Warranty Support

Lifetime - online registration required

Lifetime Web, Email and Phone Support from fully qualified, friendly staff who work in and alongside the Product Development Team



## Additional Information

### OEM option

Available for bulk buy OEM

### Made In

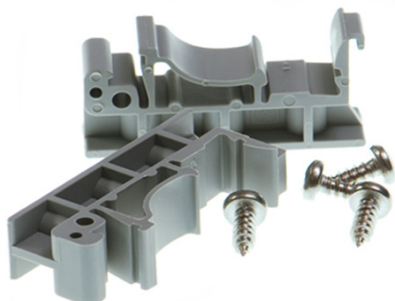
Manufactured in the UK by Brainboxes Winner 2005 European Electronics Industry Awards 'Manufacturer of the Year'

### Customisable

Brainboxes operate a 'Perfect Fit Custom Design' policy for volume users.

## Accessory Items

### ORDER CODE - DIN-Rail Mounting Kit - MK-048



### ORDER CODE - Optional Global Power Supply - PW-800

