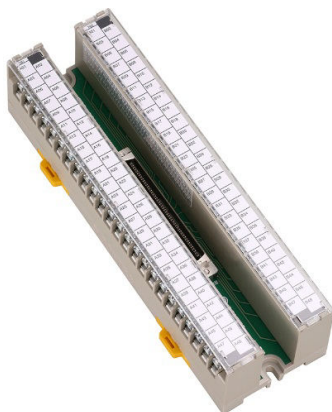


Screw Terminal (M3 x 96) EPD-96A



* Specifications, color and design of the products are subject to change without notice.

Features

Up to 96 signal lines can be connected.

The signal line from outside machinery can be connected to terminal easily by only a screw (can use it for a round shape terminal, Y form terminals).

Equipped with the [Spring-up] type terminal to prevent the terminal screws from being lost.

The optional cable can be used to connect easily to the board/card.

Optimized configuration of board wiring.

Signal banks can be mounted on DIN rails.

Specifications

Item	Specification
Rated insulative voltage	125VAC rms, 125VDC
Rated current	1A
Compatible wiring	1.25mm ² (Max) (stranded)
Insulative resistance	500VDC 1000MΩ or later (Between terminals/ Relative to earth)
Voltage resistance	500VAC 60Hz One minute (Between terminals) 1000VAC 60Hz One minute (Relative to earth)
Connector	PCR-E96MD+ (mfd. by HONDA) equivalent
Compatible rail	35mm (wide) DIN rail
Operating conditions	0 - 50°C, 10 - 90%RH (No condensation)
Weight	480g
Standard	RoHS Directive

Packing List

EPD-96A main unit...1

User's Guide...1

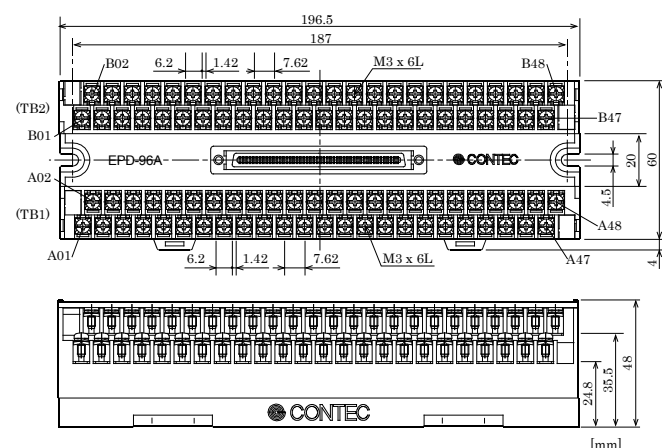
CAUTION

The option cable is not appended to the interface board/card and this product. Cable differs according to board/card used. Be sure to check the manual or visit the CONTEC's Web site to buy an appropriate one.

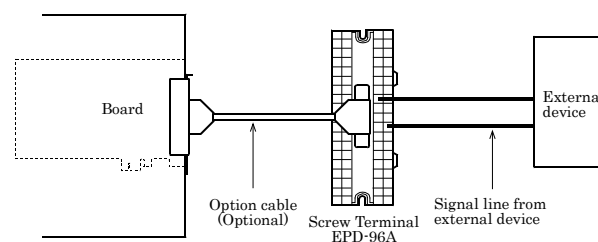
The products is a general purpose terminal fastened with screws, which relays the I/O wirings of CONTEC interface board/card or card with a 96-pin Half pitch connector. The pins in connector correspond to their respective terminals on the terminal strips on a one-to-one basis, allowing you to easily connect the board/card to an external device via the terminal strips. A round shape terminal, and a Y form terminal are available together.

Note: To connect a board/card to the accessory, option cable can be purchased separately.

Physical Dimensions



EPD-96A Connections



- (1) Connect the interface board/card and the terminal unit using the separately available option cable.
- (2) Identify the destination for connection on the terminal unit and connect the signal line from the external equipment. You can provide connection easily just by tightening the screws.

Wiring Diagram

Terminal No.	Connector Pin No.	Terminal No.
A01	48 96	B01
A02	47 95	B02
A03	46 94	B03
A04	45 93	B04
A05	44 92	B05
A06	43 91	B06
A07	42 90	B07
A08	41 89	B08
A09	40 88	B09
A10	39 87	B10
A11	38 86	B11
A12	37 85	B12
A13	36 84	B13
A14	35 83	B14
A15	34 82	B15
A16	33 81	B16
A17	32 80	B17
A18	31 79	B18
A19	30 78	B19
A20	29 77	B20
A21	28 76	B21
A22	27 75	B22
A23	26 74	B23
A24	25 73	B24
A25	24 72	B25
A26	23 71	B26
A27	22 70	B27
A28	21 69	B28
A29	20 68	B29
A30	19 67	B30
A31	18 66	B31
A32	17 65	B32
A33	16 64	B33
A34	15 63	B34
A35	14 62	B35
A36	13 61	B36
A37	12 60	B37
A38	11 59	B38
A39	10 58	B39
A40	9 57	B40
A41	8 56	B41
A42	7 55	B42
A43	6 54	B43
A44	5 53	B44
A45	4 52	B45
A46	3 51	B46
A47	2 50	B47
A48	1 49	B48