

## Relay Terminal Unit(M3.5 x 37)

### EPD-37



\* Specifications, color and design of the products are subject to change without notice.

#### Features

- Up to 37 signal lines can be connected.
- A signal line from an external device can be connected to the terminal simply by using screws.
- The optional cable can be used to connect easily to the board/card.
- Optimized configuration of board wiring.
- Signal banks can be mounted on DIN rails.

#### Specification

Item	Specification
Rated voltage	125VAC, 125VDC
Rated current	1A
Compatible wiring (terminal bank)	2mm <sup>2</sup> (Max.)
Isolated resistance	100MΩ or greater
Voltage resistance	1000VAC 60Hz 1 minute
Compatible pins	Crimp-style pins, Max. diameter 8.1mm
Connector	DC-37S-T-NR (mfd. by JAE) or equivalent
Compatible DIN rail	35mm (wide)
Operating condition	0 - 50°C, 10 - 90%RH (No condensation)
Weight	300g

#### Packing List

- EPD-37 main unit...1
- User's Guide...1

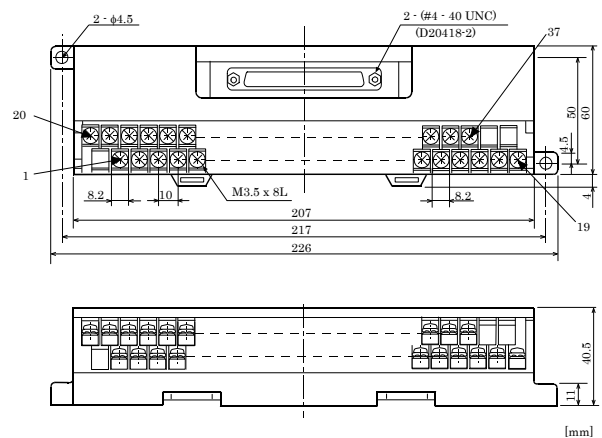
#### ⚠ CAUTION

The option cable is not appended to the interface board/card and this product. Cable differs according to board/card used. Be sure to check the manual or visit the CONTEC's Web site to buy an appropriate one.

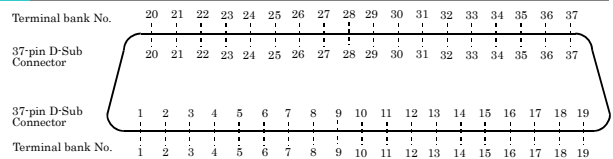
The products is a general purpose terminal fastened with screws, which relays the I/O wirings of CONTEC interface board/card with a 37-pin D-SUB connector [F (female) type]. The pins in connector correspond to their respective terminals on the terminal strips on a one-to-one basis, allowing you to easily connect the board/card to an external device via the terminal strips.

Note: To connect a board/card to the accessory, you need the separately priced option cable.

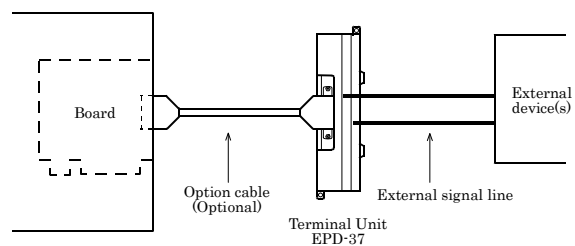
#### Physical View and Dimensions



#### Wiring Diagram



#### EPD-37 Connections



- (1) Connect the interface board/card and the terminal unit using the separately available option cable.
- (2) Identify the destination for connection on the terminal unit and connect the signal line from the external equipment. You can provide connection easily just by tightening the screws.